

BERMONDSEY SQ.

LONDON SE1

Floor	Office	Status	sq ft	sq m
4th		CAT A (Option for fully fitted)	5,425	504
3rd	South	CAT A (Option for fully fitted)	2,098	195
	North	Fully fitted	3,108	289
TOTAL			10,631	988

South

Desks	18
Meeting rooms	02
Kitchenette	01
Phone booths	02

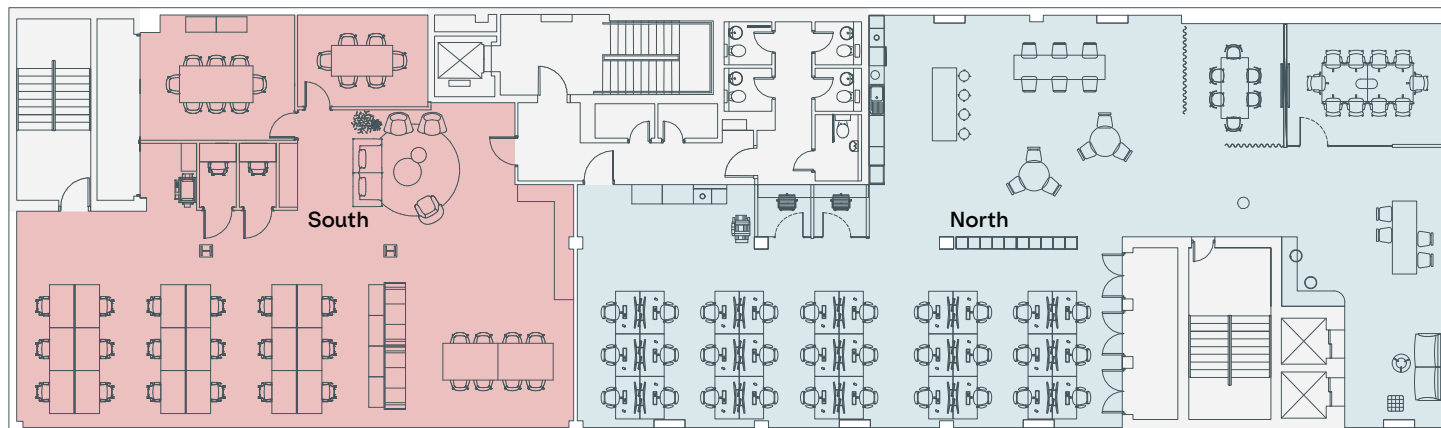
North

Desks	30
Meeting rooms	02
Kitchenette	01
Phone booths	02

3rd floor

● Core

- South (indicative fit-out) – 2,098 sq ft / 195 sq m
- North (fully fitted) – 3,108 sq ft / 289 sq m



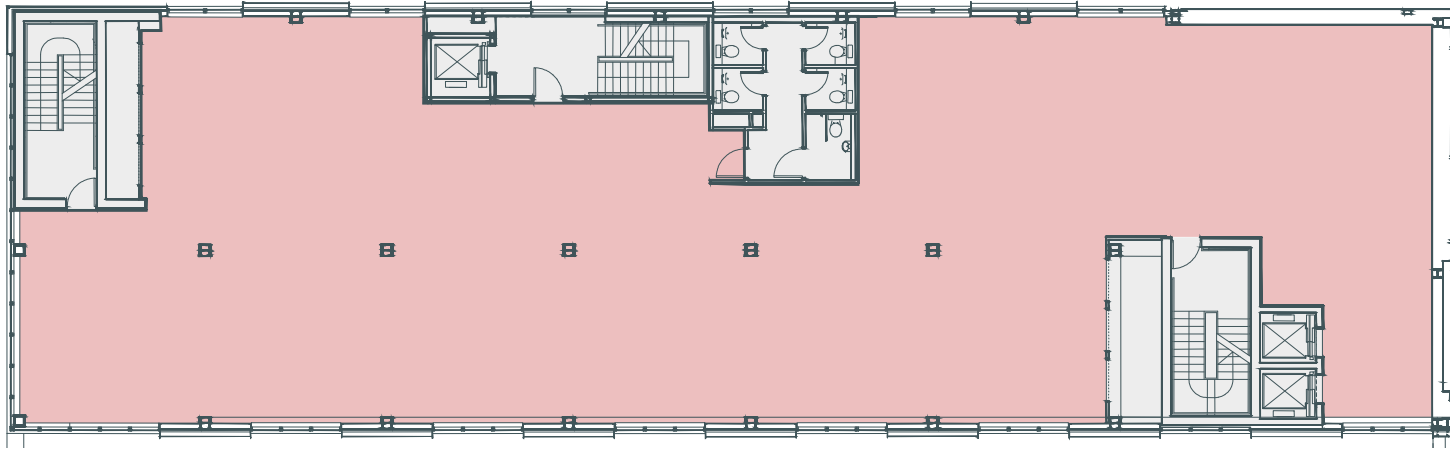
Not to scale.
For indicative purposes only.



4th floor – CAT A condition

Office 5,425 sq ft / 504 sq m

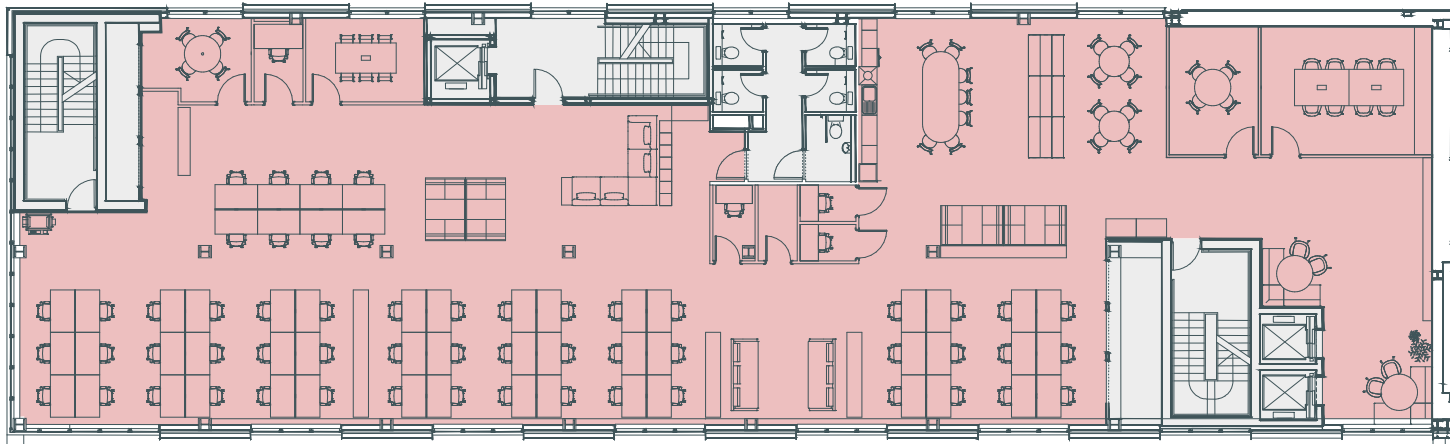
● Office ● Core



4th floor – indicative space plan

Office 5,425 sq ft / 504 sq m

● Office ● Core



Desks	56
Meeting rooms	04
Kitchen	01
Phone booths	04

Not to scale.
For indicative purposes only.

