

LONDON SE1

BERMONDSEY SQ.

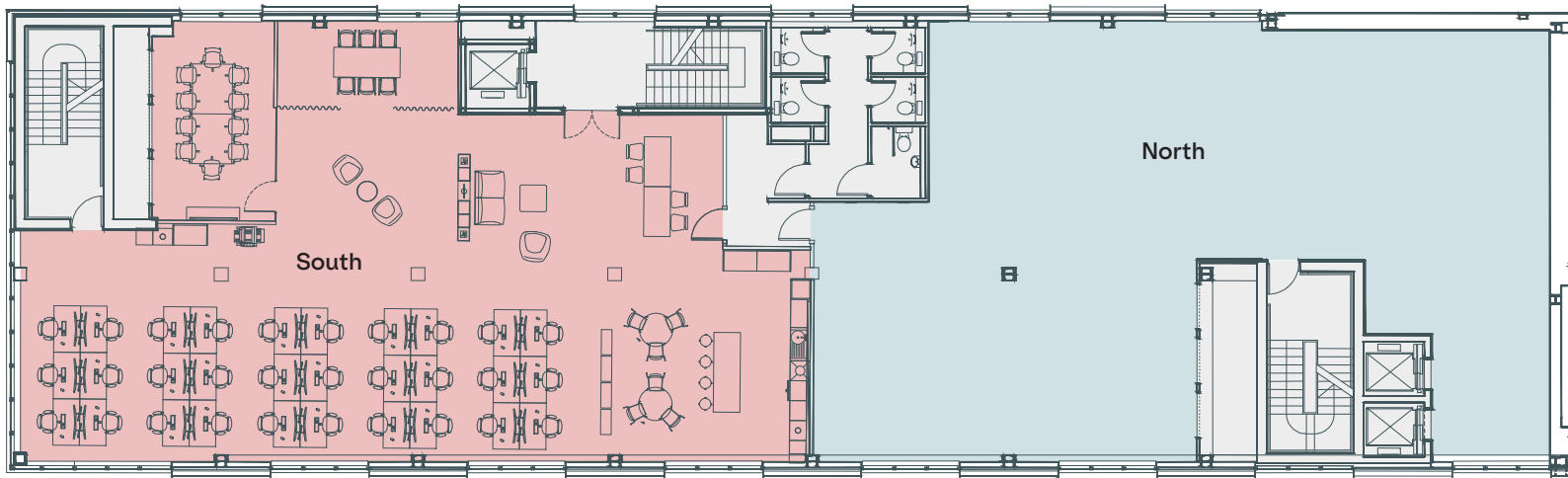
Space SQ.²

Floor	Office	Status	sq ft	sq m
3rd	South	CAT A (Option for fully fitted)	2,098	195
	North	Fully fitted	3,042	283
2nd	South	Fully fitted	3,239	301
	North	CAT A (Option for fully fitted)	2,656	247
TOTAL			11,035	1,026

2nd floor

● Core

- South (fully fitted) 3,239 sq ft / 301 sq m
- North (CAT A) 2,656 sq ft / 247 sq m

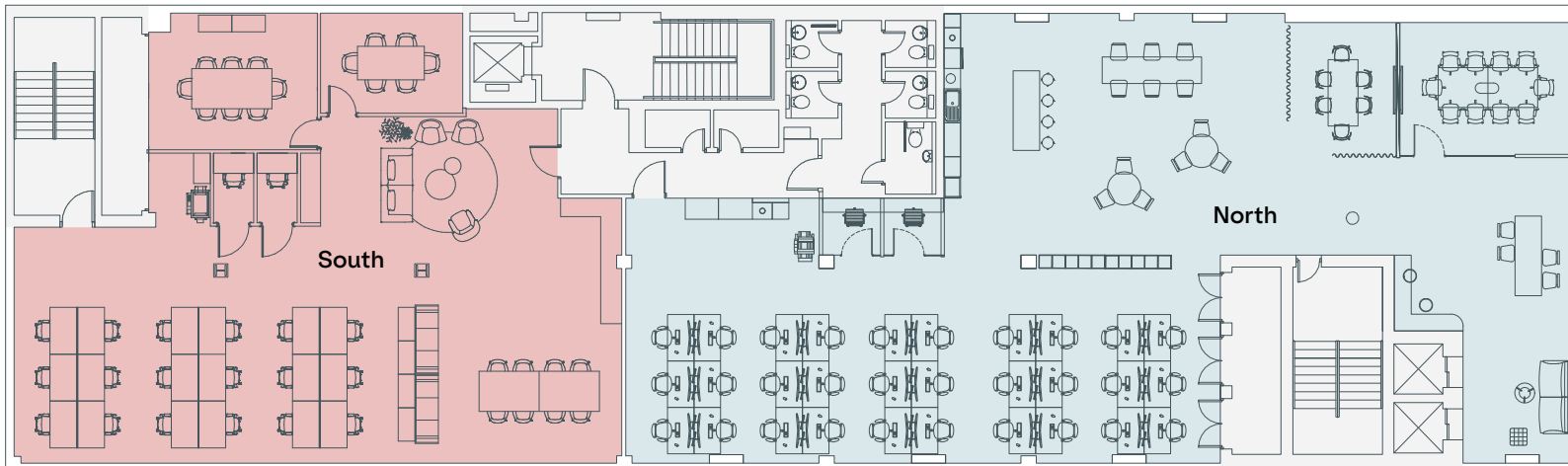


South	
Desks	30
Meeting rooms	02
Kitchenette	01
Collaboration zone	01

3rd floor

● Core

- South (indicative fit-out) – 2,098 sq ft / 195 sq m
- North (fully fitted) – 3,042 sq ft / 283 sq m



South	
Desks	18
Meeting rooms	02
Kitchenette	01
Phone booths	02

North	
Desks	30
Meeting rooms	02
Kitchenette	01
Phone booths	02

Not to scale.
For indicative purposes only.

